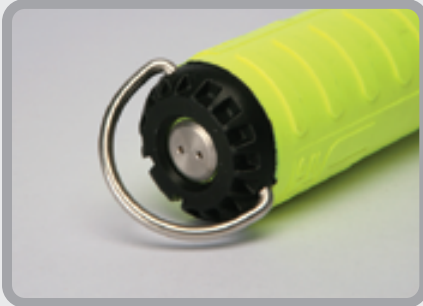
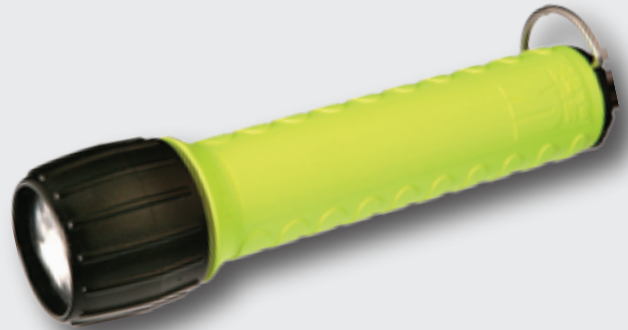


## SL3 eLED®

If you desire the most beam for your buck, look no further. The SL3 eLED® waterproof light features high intensity illumination and extensive burn time in a compact design with a price to match its small size. Choose the SL3 as your secondary light and save the rest for your next adventure.



Reinforced  
Stainless Steel Ring



### FEATURES

- Proprietary Compound Path Optics (CPO) permits high efficiency and compact size
- Thermal Recovery System recycles heat from the LED to warm batteries for improved performance in low temperatures
- Twist ON/OFF bezel sealed with two O-Rings for reliability
- Reliable waterproof seal requires 3 turns for first O-Ring release (5 turns for second O-Ring)
- Beam produces a bright spot with almost no peripheral light, reducing backscatter
- Stainless steel pressure relief valve releases excess pressure due to battery malfunction or flooding
- Stainless steel loop clips to BC accessory snap clips
- Limited Lifetime Warranty
- Proudly Made in USA

### PART NUMBERS

#### Counter Display

- 22203 SL3 eLED 9-Pack Display w/Batteries, 5 Safety Yellow/4 Black (US)
- 22201 SL3 eLED, Safety Yellow, with Batteries (single refill for POP Display)
- 22202 SL3 eLED, Black, with Batteries (single refill for POP Display)

#### Single Packs

- 22204 SL3 eLED, Safety Yellow, Single Pack, No Batteries
- 22205 SL3 eLED, Black, Single Pack, No Batteries
- 22206 SL3 eLED, Safety Yellow, Single Pack, With Batteries
- 22207 SL3 eLED, Black, Single Pack, With Batteries

### SPECIFICATIONS

|                   |                                |
|-------------------|--------------------------------|
| <b>Brightness</b> | <b>125 Lumens</b>              |
| <b>Burn Time</b>  | <b>32 Hours</b>                |
| <b>Distance</b>   | 500 ft / 152 m                 |
| <b>Lamp</b>       | High intensity white LED       |
| <b>Batteries</b>  | 3 C Alkaline / LR14            |
| <b>Size</b>       | 7.5 x 2 x 2 in / 19 x 5 x 5 cm |
| <b>Weight</b>     | 13 oz / 369 g                  |
| <b>Waterproof</b> | 500 ft / 150 m                 |

